

NAVAJO TECHNICAL UNIVERSITY



ANNUAL CRIME AND SECURITY REPORT 2018

Table of Contents

Introduction	2
Annual Crime Report	2
The Campus SaVE Act	2
NTU Security, Authority and Jurisdiction	3
Incident Command Center Communication Chart	3
Reporting Procedures	4
Accurate and Prompt Reporting	4
Crime Prevention Programs Policy Statement	4
Missing Student Notification	4
Timely Warnings	4
Access Policy	5
Procedure for Reporting an Emergency	5
Procedures for Reporting a Crime in Progress	5
Emergency Drills, Testing and Evacuation Procedures	5
Emergency Response and Evacuation Procedures	5
Incident Management and Recovery Policy	6
Policy on Drugs and/or Alcohol	6
Sexual Violence	7
Sex Offense Policy Statements	7
Reporting Sexual Violence	7
Sexual Assault Victims' Bill of Rights	7
Registered Sex Offender Policy Statement	8
To report an individual or a situation	8
Sanctions	8
Annual Crime Statistics	9
Violence Against Women Act (VAWA)	10
Dating Violence	10
Domestic Violence	10
Stalking	10
Course of conduct	10
Fire Safety Report	11
Procedure for Reporting a Fire	11
Fire Hazards	11
Procedures for Student Family Housing	12
Procedures for Efficiency I and II	12
Fire Safety Education and Training	12
Campus Fire Safety Report	12
Appendices:	
A. Important Telephone Numbers for NTU Campus and Community	14
B. Site Map for NTU Campus	15
C. NTU Building Codes	16
D. Navajo Technical University Physical Address Map	17

Introduction

This document is the 2018 Annual Security and Fire Safety Report for Navajo Technical University. It is prepared to create campus and community awareness about security and safety. The Jeanne Clery Disclosure of Campus Security Policy and Campus Crime Statistics Act require most all higher education institutions to develop a report and make available an Annual Security Report (ASR). This report is available in hardcopy upon request, and it can be accessed on NTU website.

The Clery Act mandates all institutions of higher education (IHEs) that participate in the federal student financial aid program to disclose information about campus criminal activity and in the surrounding communities. The Act affects virtually all public and private IHEs and is enforced by the U.S. Department of Education.

The Clery Act contains the Campus Sexual Assault Victim's Bill of Rights, which requires colleges to disclose educational programming, campus disciplinary process, and victim rights regarding sexual violence complaints. In 2013 the Clery Act was expanded by the Campus SaVE Act, which broadened Clery requirements to address all incidents of sexual violence (sexual assault, domestic violence, dating violence and stalking).

Further changes in the law were made in 1992; a requirement that schools must afford victims of campus sexual assault certain basic rights. In 2003, schools were required to notify the campus community about where public (Megan's Law) information about registered sex offenders on campus could be obtained. In July 2015 IHE's have been mandated to include statistics mandated in the Violence Against Women Act: Sexual Assault, Domestic Violence, Dating Violence and Stalking in this report.

Navajo technical University works to provide a safe environment for all students, staff, and faculty, and reduce risk and the potential for criminal activity. Yet criminal and other illegal activity do occur near or on campus. Safety and security is thus a shared responsibility, and all current and prospective community members are expected to contribute to the safety and security of the NTU community. The best protections against campus crime are: a strong enforcement presence by security; an aware, informed, alert campus community; and a community commitment to reporting suspicious activities and using common sense when carrying out work activities.

Annual Crime Report

The Dean of Research and Discovery along with campus security personnel prepare this report in cooperation with the local law enforcement agencies. Each entity provides updated information on their educational efforts and programs to comply with the Act. Campus crime, arrest and referral statistics as well as sexual assault, domestic violence and stalking incidents are reported to NTU Security, as well as designated campus officials including directors, department heads, designated campus security authorities, and local law enforcement agencies.

The Campus SaVE Act

As of March 2014, the U.S. Department of Education has enforced the Campus Sexual Violence Elimination (SaVE) Act, which affects every post-secondary institution participating in Title IV financial aid programs (virtually all colleges and universities). The Campus SaVE Act amended the Clery Act, which requires campuses to provide annual statistics on incidents of campus crimes, including sexual assaults occurring on campus and reported to campus authorities or local police.

The Campus SaVE Act has several provisions. It improves transparency by requiring schools to report a broader range of sexual violence incidents occurring on campus, while also improving the complaint process so victims know their rights and are supported. It also requires an equitable disciplinary proceeding by borrowing language from the 2011 Title IX Dear Colleague Letter Guidance. Finally, it offers schools resources from federal agencies to improve their practices while also requiring them to provide education and awareness programs on campus.

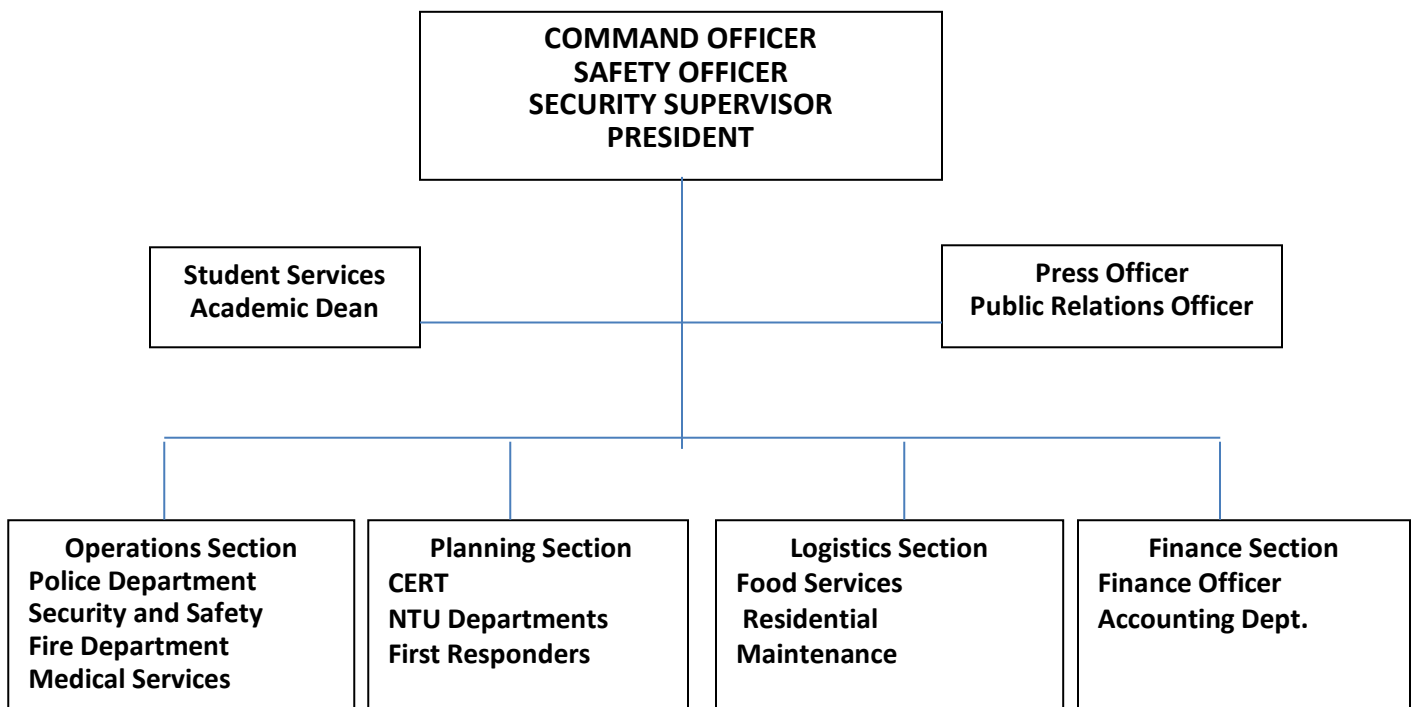
The following pages contain additional information, including crime prevention, fire safety, law enforcement authority, crime reporting policies, disciplinary procedures and other matters of importance related to security and safety on campus.

NTU Security, Authority and Jurisdiction

Security has the authority to enforce campus polices, certain Navajo Nation laws, and they have the authority to detain individuals. They enforce parking regulations, removal of person’s vehicle, and ask for identification and to determine whether individuals have lawful business with the university. Criminal incidents are referred to the Navajo Nation Police and federal law enforcement agencies, as well as the New Mexico State Police, McKinley County Sheriff’s Office.

NTU Security maintains coordinated working relationship with the Navajo Nation Police, McKinley County Sheriff’s Office, and federal law enforcement agencies located in Gallup, Farmington and Albuquerque, New Mexico. All crime victims and witnesses are strongly encouraged to immediately report each to campus Security, who will then report it to the appropriate authorities.

INCIDENT COMMAND CENTER COMMUNICATION CHART



Reporting Procedures

Reports made to Security are kept confidential (including the identity of the reporting party), regardless of whether the complainant wants to pursue action within the NTU campus system or the US criminal justice system. The purpose of confidential reporting is to comply with the individuals’ wish to keep the matter anonymous while ensuring the future safety of the individual and others.

All incidents and/or situations are first reported to Security Officer on duty. The Officer, the Supervisor, and Safety Officer, makes a decision whether to establish an incident command center depending on the situation or incident. Mass communication is initiated via intercom, a RAVE Alert is send out, mass email is sent out, and hourly updates at made via all communication systems.

Accurate and Prompt Reporting

People reporting incidents are asked to have written statements completed in a reasonable amount of time and submitted to appropriate authorities. Security officers have reports written within 24 hours of an incident.

Crime Prevention Programs Policy Statement

NTU Student Housing and NTU Security encourage students and family residents to practice basic safety habits as outlined in the NTU Student Handbook and the Student Housing Manual such as keeping doors locked, walking with friends and calling Security to report criminal activity or for an escort.

Missing Student Notification

Any person concerned about another student's welfare and/or if the student has been considered "officially missing" for 24 hours, should immediately report the information to NTU Security and the Navajo Police department. If the student lives on campus, NTU Security and the Navajo Police will perform a welfare check on the individual. If the individual is not located, Security and the appropriate law enforcement personnel shall contact the appropriate administrators and departments.

As noted in the NTU Student Housing Handbook, all students living in student housing will have the option to fill out a confidential register for contact notification. This document will be kept on file and will only be used during a missing person(s) situation and NTU will attempt to make contact with that person within 24 hours. In the event that a missing student is under the age of 18, the appropriate administrators (upon receiving notification from NTU Security Department) will notify the parent or guardian of the person(s).

Timely Warnings

Under the Clery Act, any time a crime has or is occurring that poses a serious or ongoing threat to the rest of the campus, the university must provide timely warnings in a way that is likely to reach every member of the campus community. This requires the institution to assess the risk to public safety after an incident of sexual assault, stalking, or domestic or dating violence is reported.

In the event that a situation arises, either on campus or in close geographic relation to NTU, which constitutes an ongoing or continuing threat, a campus wide "timely warning" will be issued by NTU safety and security personnel. The warning will be issued through the college RAVE alert system, e-mail, text messaging and phone calls. Depending on the particular circumstances of the situation, campus Security Authorities may also post a notice on each bulletin board at their respective location across campus.

Access Policy

NTU maintains an open campus. Campus Security is responsible for evening and after hour access to buildings and lockup. Student housing area is patrolled regularly by Security Officers, and access to individual units is controlled in accordance with the NTU Student Housing Handbook. Residential housing department maintains the key system and enters units according to the NTU Student Housing Handbook.

Procedure for Reporting an Emergency

To report an emergency, call NTU Security: (505) 340-7444 or (505) 786-4345, and give the following information to the officer:

1. The name of the building and area of campus.
2. The nature of the emergency, including the number of injured people and any known injuries.
3. Your full name and the telephone number from which you are calling, in case you are disconnected.

Community members, students, faculty, staff, and guests are encouraged to report all crimes, injuries, illegal and suspicious activity, and public safety related incidents to the NTU Security at the above number. All incident reports are immediately reviewed and communicated to the proper authorities.

Procedures for Reporting a Crime in Progress

To report a crime in progress or suspicious activity, call NTU Security: (505) 340-7444 or (505) 786-4345, and give the following information to the officer:

1. Who (how many and description of individuals) is committing a potential crime?
2. What (crime or illegal activity) is happening?
3. Where is it happening?
4. When did it happen?

For all emergencies and criminal activity reported, NTU security will prepare a report and distributed to appropriate authorities on campus or law enforcement agencies. All criminal activity should be reported to NTU Security to ensure inclusion in the annual crime statistics and to aid in providing timely warning notices to the community, when appropriate.

Emergency Drills, Testing and Evacuation Procedures

Campus emergency drills are conducted continually for students, staff and faculty. They include fire safety, evacuation, Shelter-in-Place, lockdown, or other drills as determined by the NTU Safety Officer and Security. Fire drills are conducted in the dormitory during fall and semester to teach and assist students with evacuating the correct way to designated evacuation locations. The Safety department has a developed annual schedule for emergency drills. More frequent fire drills and training are in the process of being performed for the NTU dormitory and family housing locations.

Emergency Response and Evacuation Procedures

In the event of an emergency or situation involving an immediate threat to the health or safety of students, faculty, or employees, NTU Security and Safety department will initiate an emergency situation by setting up the Incident Command Center, and will notify the campus community. Notification will include instructions and procedures to follow depending on the gravity of the emergency. NTU Security will immediately determine which segment or segments of the campus are at risk by assessing and contacting emergency personnel. Upon confirmation of an emergency, Security and the Safety office will initiate an emergency response, which will include mass communication utilizing the phone intercom system, email and website systems, RAVE mobile alert, and paper postings.

RAVE is NTU's Emergency Notification System. This system automatically informs all students, faculty, staff, and community members of school closures and other emergencies. These alerts are sent via Text Message to registered cell numbers, email, automated phone message, and computer desktop messages on college computers.

All NTU employees and students are encouraged to register their cell phone numbers with the RAVE Alert System. Call the IT Helpdesk for more information about this system, or go to the NTU website, click on the IT Help Desk, click on the security and register for RAVE Alerts. For more information about NTU's Emergency Response Plan, contact the University Safety Officer at 505 422 1645.

In the event of a significant emergency the Campus Emergency Response Team (CERT) will be initiated and will respond according to established procedures noted the emergency Management Response Plan. The CERT team will assess the situation to determine need inform, update, and communication information to the community. In the event that an emergency poses a threat to the surrounding community, emergency personnel will work with tribal emergency services to issue information and respond to the emergency. Disseminating emergency information to the larger community will use press releases, radio announcements, and telecom alerts, depending on the nature of the emergency. All press releases and other information will be issued by the Communication department, with the approval of the school administrators, Safety Officer and the President.

Incident Management and Recovery Policy

NTU is committed to ensuring a safe environment for students, faculty and staff by maintaining an effective and comprehensive program of incident management and recovery. In the event of a major incident or disaster that compromises operational function of NTU, the management team's priorities will be:

- Health and safety of students, faculty, staff, and community personnel.
- Continuity of teaching, business operations, and other campus functions
- Preservation of facilities
- Safeguard from financial loss

It is the responsibility of each faculty and staff member to know their role in an emergency, to have read the Emergency Response Plan, know the identity of community management team, and participate in trainings, drills and other emergency preparations as requested by campus administration.

Policy on Drugs and/or Alcohol

The use or possession of guns, illegal drugs and/or alcohol is prohibited on the Navajo Nation and on the NTU campus. Attending class under the influence of alcohol or drugs or possessing a gun subjects the individual to detention or arrest by the Navajo police, dismissal and or suspension from NTU. The Navajo police enforce all violations of Navajo, state, and federal law.

It is unlawful for employees and students to manufacture, distribute, disperse, possess, or use a controlled substance on the NTU campus. College classes away from the main campus and college-sponsored activities are also covered by the Drug Free Work Place Act of 1988 (DFWA), which requires NTU to maintain a drug free workplace. The unlawful manufacture of, distribution, sale, possession or use of alcohol or illicit drugs by employees on NTU property or while conducting College business are prohibited. Employees who engage in such activities are subject to disciplinary action which may lead to termination and possible arrest. (NTU personnel policy handbook, Student Handbook: Pg. 17, Code Of Conduct, parts 6 and 7)

Sexual Violence

As an institution of higher education, NTU is committed to ensuring that all students have access to a quality learning experience and the opportunity to pursue their academic goals in a safe supportive learning environment. All forms of sexual violence, including rape and sexual assault, interfere with students' abilities to be active, engaged learners. As such, NTU is actively committed to reducing and eradicating the incidences of sexual violence and eliminating the root causes that lead to sexual violence, as well as providing appropriate support to victims and survivors when an act of sexual violence does occur.

Sex Offense Policy Statements

It is the policy of NTU to provide employees and students with an environment free from sexual harassment. This includes unwelcome sexual advances, requests for favors and other verbal or physical contact if a sexual nature. (See NTU Employee Handbook, Student Handbook)

Students, staff, and faculty are encouraged to report all instances of sexual harassment and criminal activity. All reported activity will be promptly addressed, with confidentiality, and with the appropriate manager. Every attempt will be made to prohibit retaliation against any employee or student because of alleged sexual harassment or any employee and student who has testified, assisted, or participated in any manner in an investigation of a report.

Reporting Sexual Violence

Students who have been victimized or survived a sexual assault/violence should report the incident to NTU Security immediately. Once reported, an institutional representative will assist the victim/survivor in notifying the proper authorities. Any and all evidence should also be preserved; this include not taking showers, placing clothes in paper bags, going to the health center for an evaluation. Evidence is important for

prosecuting a criminal offense. Campus resources include the Counseling department where one can meet and received advice from counselors. Off campus resources include the Crownpoint Health Center.

Sexual Assault Victims' Bill of Rights

The Campus Sexual Assault Victims' Bill of Rights became federal law in July of 1992. This law requires that all colleges and universities (both public and private) participating in federal student aid programs afford sexual assault victims certain basic rights.

- Survivors shall be notified of their options to notify law enforcement.
- Accuser and accused must have the same opportunity to have others present.
- Both parties shall be informed of the outcome of any disciplinary proceeding.
- Survivors shall be notified of counseling services.
- Survivors shall be notified of options for changing academic and living situations.

Registered Sex Offender Policy Statement

The Navajo Police, NTU Security and other law enforcement agencies maintain all pertinent information, including pictures and legal descriptions of all registered violent and sexual offenders who live in the community or may be employed nearby.

To report an individual or a situation

1. Notify NTU Security as soon as possible.
2. Explain to security and appropriate authorities all criminal misconduct.
4. Authorities from NTU, health officials, and law enforcement will confer on a resolution with appropriate parties for a resolution.
5. A written statement will be generated by complainant/victim and given to appropriate authorities.

If informal resolution is not achieved

1. Formal, written charges, indicating specific code violations are to be presented to the accused after notification of the incident to appropriate authorities.
2. A hearing may be set for no longer than 15 days after the charges are presented.
3. A hearing may be held before the Dean of Student Services (or designee) or in cases of a more serious nature, the victim may choose a hearing before the Navajo Nation Courts.
4. Recommendations by designee or the Dean of Student Services are to be forwarded to the Vice President no later than 5 working days after the hearing. Decisions are to be communicated to the accused no later than 5 working days after receipt of the recommendations. Victims may request to be notified of the outcome of the hearing, including sanctions.
5. The decision of the Dean of Student Services and the Vice President is final. It is subject only to the student's right of appeal to the President of the University. The President may request a review, but the final decision rests with the Vice President.

Sanctions

Following a hearing, any one or more of the following may be imposed:

1. No action - charges are dismissed.
2. Warning: a written or oral reprimand for violation of specific regulations, including the possibility of more additional discipline sanctions in the event of another violation within a stated period of time
3. Disciplinary probation: exclusion from participation in privileged activities as specified in writing for a period of time not to exceed one school year.
4. Educative/counseling/creative interventions with specific goals, related to the offense, and measurable. Some examples are: counseling; attending workshops; community service. This may include written or verbal apology.
5. Restitution: Reimbursement for damage to or misappropriation of property. This may take the form of appropriate service or other compensation at the discretion of the Dean of Student Services.

6. Suspension: exclusion from classes, other privileges or activities as specified in writing for a definite period of time not to exceed two years.

Annual Crime Statistics

The following table shows the number of incidents reported as criminal activity. It also shows additional record of activity that was reported involving NTU Security and the local law enforcement. The following categories of crime are established and categorized according to the Clery Act mandates.

NTU Annual Crime Report (as of October 1, 2018)						
		2013	2014	2015	2016	2017
1. Criminal Homicide						
a. Murder		0	0	0	0	0
b. Non negligent Manslaughter		0	0	0	0	0
2. Sex Offense						
a. Forcible		0	0	0	0	0
b. Non-Forcible		0	11	1	0	0
3. Robbery		2	0	7	0	0
4. Aggravated Assault		10	4	4	3	0
5. Burglary						
a. Evidence of unlawful entry		0	0	3	3	0
b. Unlawful entry of a structure		0	0	3	0	0
c. Entry and commission of felony or theft		0	0	0	0	0
6. Motor Vehicle Theft		0	1	3	0	1
7. Arson		0	0	0	0	0
Arrests						
1. Liquor Law Violation:	On Campus	97	0	16	7	15
	Residence Halls	85	148	44	25	7
2. Drug Law Violation:	On Campus	6	0	3	0	7
	Residence Halls	6	11	7	10	4
3. Illegal Weapon Possession:	On Campus	0	0	3	2	0
	Residence Halls	0	0	3	0	0
Hate Crimes; reported by categories of..						
a. Prejudice		0	0	0	0	0
b. Race		0	0	0	0	0
c. Gender		0	0	0	0	0
d. Religion		0	0	0	0	0
e. Sexual orientation		0	0	0	0	0
f. Ethnicity		0	0	0	0	0
g. Disability		0	0	0	0	0
h. Larceny/Theft		0	0	0	0	0
i. Simple Assault		0	0	0	1	0
j. Intimidation		0	0	0	0	3
k. Destruction/Damage/Vandalism of Property		0	0	0	0	2

NAVAJO POLICE DEPARTMENT				
CALLS FOR SERVICES & ARRESTS				
2016				
PART ONE OFFENSES	CROWNPOINT		CHINLE	
	Calls	Arrests	Calls	Arrests
Homicide	9	5	7	1
Rape	42	0	53	2
Robbery	1	0	6	3
Aggravated Assault	71	36	89	46
Burglary	122	3	128	4
Larceny	127	3	265	79
Motor Vehicle Theft	164	6	212	7
Arson	18	1	68	4
TOTAL	554	54	828	146
OTHER THAN PART ONE OFFENSES	CROWNPOINT		CHINLE	
	Calls	Arrests	Calls	Arrests
Assaults (No Weapons)	39	9	70	7
Forgery/Counterfeiting	2	0	2	0
Fraud	7	0	6	0
Embezzlement	1	0	1	0
Stolen Property	78	4	145	1
Vandalism	536	41	640	33
Weapons	65	15	204	32
Prostitution	0	0	1	0
Sex Offenses	338	7	243	0
Drug Abuse	34	13	95	55
Gambling	1	0	0	0
DWI	448	208	1,201	429
Liquor Laws	23	21	96	76
Drunkenness	4,862	2,103	7,037	3,308
Disorderly Conduct	837	199	1,833	221
All Other Offenses	13,484	478	21,689	1,239
Child Abuse	483	31	158	13
Domestic Violence	1,243	296	922	330
Suspicious Persons	83	10	1,876	31
Curfew & Loitering	19	9	45	0
Runaways	107	3	14	0
TOTAL	22,690	3,447	36,278	5,775
GRAND TOTAL	23,244	3,501	37,106	5,921

VIOLENCE AGAINST WOMENT ACT (VAWA)

The third category of crime statistics are those added to the Clery Act by the Violence Against Women Act. Sexual assault is considered a criminal offense and is discussed earlier in this chapter. In addition, domestic violence, dating violence and stalking are considered crimes for the purposes of Clery Act reporting and are defined and discussed in this section.

Dating Violence is defined as violence committed by a person who is or has been in a social relationship of a romantic or intimate nature with the victim. The existence of such a relationship is determined based on the reporting party's statement and the length of the relationship, the type of relationship, and the frequency of interaction between the persons involved in the relationship.

For the purposes of this definition:

- dating violence includes, but is not limited to, sexual or physical abuse or the threat of such abuse.
- dating violence does not include acts covered under the definition of domestic violence.

Depending on the differences in the social culture of different people and their use of terms, a reporting party may describe a dating relationship using different terms from how an institutional official might describe "dating." When the reporting party asserts that there was a dating relationship, it is assumed that the victim and perpetrator were in a dating relationship to avoid incorrectly omitting incidents. The victim's use of terms such as "hanging out" or "hooking up" rather than "dating," or whether or not the relationship is described as "monogamous" or "serious" is not the determining factor. No matter who reports the incident, whether it is the victim or a third party, it is the responsibility of the institution to determine whether the incident should be included as Dating Violence.

Domestic Violence is defined as a felony or misdemeanor crime of violence committed:

- By a current or former spouse or intimate partner of the victim
- By a person with whom the victim shares a child in common
- By a person who is cohabitating with, or has cohabitated with, the victim as a spouse or intimate partner
- By a person similarly situated to a spouse of the victim under the domestic or family violence laws of the jurisdiction in which the crime of violence occurred
- By any other person against an adult or youth who is protected from that person's acts under the domestic or family violence laws of the jurisdiction in which the crime of violence occurred.

Stalking is defined as engaging in a course of conduct directed at a specific person that would cause a reasonable person to:

- Fear for the person's safety or the safety of others; or
- Suffer substantial emotional distress.

Course of conduct means intentional behavior, including, but not limited to, acts in which the stalker directly, indirectly, or through third parties, by any action, method, device, or means, follows, monitors, observes, surveils, threatens, or communicates to or about a person, or interferes with a person's property.

- Reasonable person means a person under similar circumstances and with similar identities to victim.
- Substantial emotional distress means significant mental suffering or anguish that may, but does not necessarily require medical or other professional treatment or counseling.

A single course of conduct may include varying Stalking activities and may include acts committed over electronic communication (e.g., emails, texts or social media).

NAVAJO TECHNICAL UNIVERSITY			
Violence Against Women Act OFFENSES			
Crime- On Campus	2016	2017	2018
a. Domestic Violence	0	0	0
b. Dating Violence	0	0	0
c. Stalking	0	0	0
Crime-Student Housing Facilities	0	0	0
a. Domestic Violence	0	0	0
b. Dating Violence	0	0	0
c. Stalking	0	0	0

FIRE SAFETY REPORT

NTU publishes an annual fire safety report that contains information about campus fire safety practices and standards. The report includes the number, cause, related injuries and deaths, and property damages associated with each fire, and are intended to increase campus fire safety awareness by providing students, staff and faculty with information and statistics, in a similar format as the crime statistics. This information provides prospective and current students an awareness and information regarding the policies, concerns, and fire safety conditions that are present at the University.

Navajo Technical University has three separate housing facilities. There are 30 family housing units for student with families. The male dormitory, Efficiency Apartments one, has 76 beds, and, the female dormitory, Efficiency Apartment two, has 102 beds. All apartment and family housing units are equipped with smoke detectors, sprinkler system, fire extinguishers and emergency evacuation doors. Fire safety and evacuation is part of the student orientation at the beginning of each semester and during dorm meetings.

Smoking is not allowed on campus (except in designated areas) nor is open flame allowed in the student housing or dormitories. All fires on campus should be first reported to Security and then reported to local fire department and law enforcement if necessary. An incident report is completed by NTU Security and is forwarded to the appropriate administrator. Reports are also forwarded to the Director of Residential Services if the fire occurs in the residential units. Housing tenants must report all fires to the NTU Security department who will forward the information to the Dean of Student Services.

Procedure for Reporting a Fire

Call Security at 505 340-7444 to report a fire. Communicate the following information:

- the exact building name and area of campus,
- the nature of the emergency, including the number of injured people and their known injuries,
- your full name and the telephone number from which you are calling, in case you get disconnected,
- do not hang up as additional information may be needed.

Fire Hazards

The following items and/or practices are considered fire hazards and are prohibited in dormitories, family housing units, or within 100 yards of campus facilities:

- candles (with or without wick), Incense, any open flame,
- explosive or combustible materials or liquids (lighter fluid, fireworks, butane),
- or hanging anything near or around life safety equipment (smoke detectors, sprinklers, etc.).

Evacuation Procedures for Student Family Housing

In the event of a fire, (disaster, bomb threat, etc.), tenants in the south side student housing will evacuate to the field that is located to the north of the housing complex. Tenants in the middle of student housing will evacuate to the parking lot to south of the Student Services building. Tenants in the west end of student housing will evacuate to the field located to the north.

Evacuation Procedures for Efficiency Apartments I and II

Tenants will use the nearest emergency exit door located in the common area or the emergency exit doors located at the north, south, west or east access points located adjacent to the dorms.

Fire Safety Education and Training

Fire Safety Training and practice drills are ongoing throughout the year for all students, staff, faculty, and residential personnel have ongoing training on fire safety and emergency management.

NTU has a Community Emergency Response Team that is prepared to assist with emergencies that may arise on campus. The Team has established building maps, campus maps and procedures that is shared with the local fire departments and the local ambulance crews to help assist them with performing their duties in emergency situations.

Campus Fire Report

The following chart shows the total number of fires and related incidents this year. NTU has not experience any fires this year, nor any that occurred in the last three years.

Code	<u>NTU Building</u>	Total Fires	<u>BLDG</u>	<u>NTU Building</u>	Total Fires
M1	Modular Classroom/ABE/GED	0	M57	Wellness Center	0
M2	Modular Classroom/ABE/GED	0	MT1	CDL Trailer	0
M3	Modular Classroom/Energy Systems	0	MT2	Maintenance Trailer	0
M4	Modular Office/Counseling	0	MT11	Faculty/Staff Trailer	0
M5	Modular Classroom/Early Childhood	0	MT12	Faculty/Staff Trailer	0
M6	Modular Classroom/English	0	MT13	Faculty/Staff Trailer	0
M7	Modular Classroom/Math	0	MT14	Faculty/Staff Trailer	0
M8	Modular Classroom/E-Learning	0	MT15	Faculty/Staff Trailer	0
M9	Modular Classroom Math	0	MT16	Faculty/Staff Trailer	0
M10	Modular Classroom Dine' Studies	0	MT17	Faculty/Staff Trailer	0
M11	Modular Classroom Stem Lab	0	MT18	Faculty/Staff Trailer	0
M12	Modular Classroom Math	0	MT19	Faculty/Staff Trailer	0
M14	Modular Classroom English	0	MT20	Faculty/Staff Trailer	0
M15	Modular Classroom English	0	MT4	Maintenance Storage	0
M16	Book Store	0	MT5	Maintenance Storage	0
M31	Walk in Freezer/Storage	0	MT6	Guard House	0
M32	Multi-Purpose (Cafeteria, Copy)	0	MT7	Dome (Observatory)	0
M33	Faculty Housing complex A(1-6)	0	MT8	Faculty Housing	0
M34	Faculty Housing complex B(1-6)	0	MT9	Faculty Housing	0
M35	Faculty Housing complex C(1-6)	0	MT10	Faculty Housing	0
M36	Student Service/Law Advocate/Nursing	0	EAST CAMPUS		
M37	Student Family Housing (Apt 1-16)	0	E1	Veterinarian/Clinic	0
M38	Student Family Housing (Apt 17-32)	0	E2	Veterinarian Barn	0
M39	Efficiency Apartment 1	0	E3	Pole Barn	0
M40	Efficiency Apartment 2	0	ET1	Extension Office	0
M41	Culture Center Dine' Studies/Math	0	ET2	Camper Trailer 1	0
M42	Empowerment Center(Admin)	0	ET3	Camper Trailer 2	0
M43	Library	0	WEST CAMPUS		

M44	Administration/Admission/Registration	0	W1	Storage (Old Maint. Shop)	0
M45	Outside Restrooms	0	W2	Storage (Old Carpentry Class)	0
M47	Child Care Center	0	W3	Storage (Old 4 Automotive Class)	0
M48	Science Building/Business/ Technology	0	W4	Storage (Old Bldg Maintenance)	0
M49	Trades Building	0	W5	Carport	0
M50	Welding Shop	0	W6	Lube House	0
M51	Metal building	0	W7	Records (Old Warehouse)	0
M53	Culinary Arts/Hospitality Center	0	W8	Pump House	0
M54	Information Technology	0	W9	Potable Water House	0
M55	Fabrication Lab	0	W10	HRI Office	0
M56	Green House	0	W11	Large Storage (Old Warehouse)	0
			W12	Horse shoe Building	0

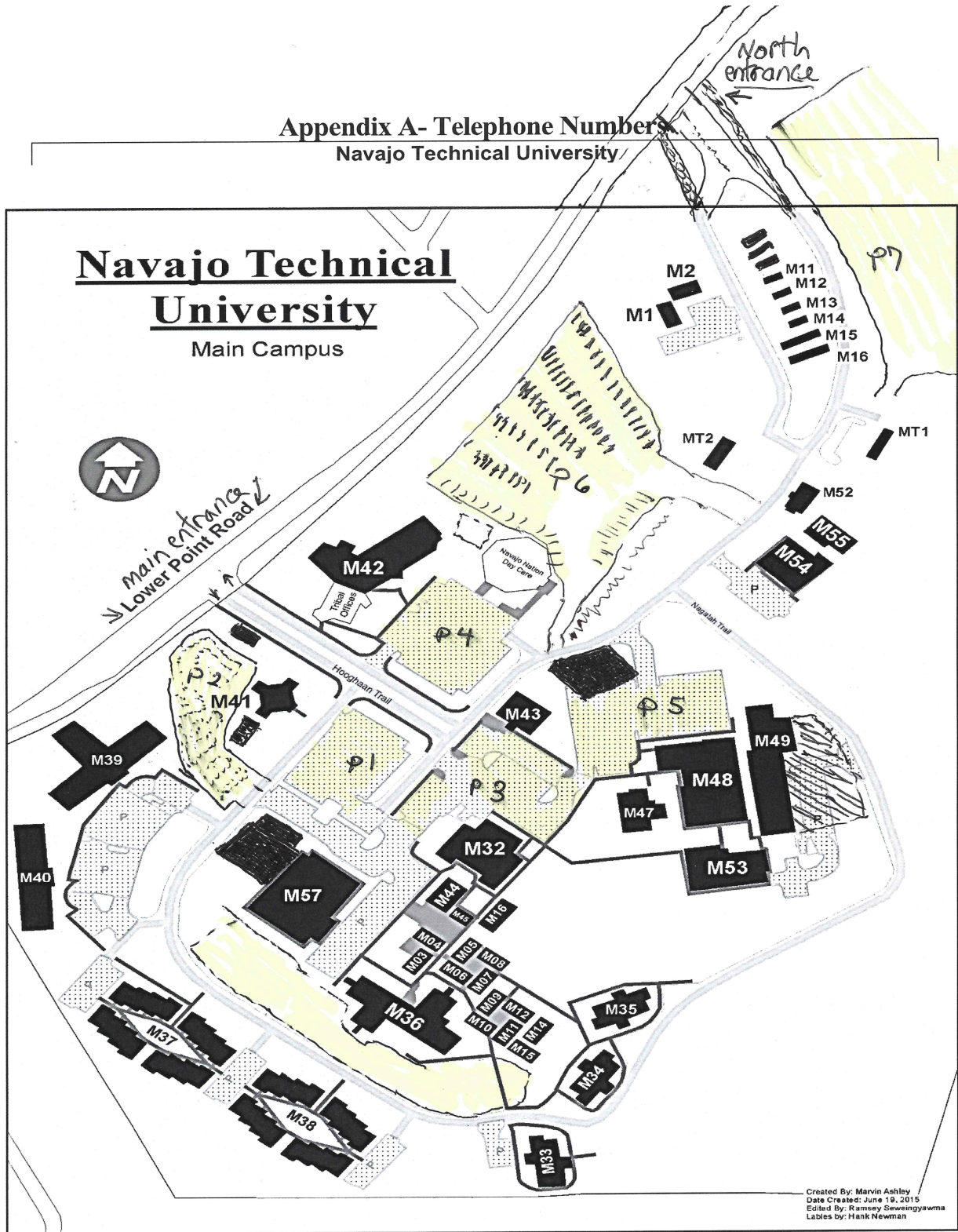
Appendix A

Important Telephone Numbers for NTU Campus and Community

Navajo Technical University Telephone Numbers	
Administration Building	505-786-4100
Business Office	505-786-4184
President	505-786-4112
Dean of Instruction	505-786-4113
Human Resource Office	505-786-4110 or 4109
Dean of Student Services	505-786-4104
Student Services Counselors	505-786-4138
Residential Services	505-786-4175/5960
Maintenance & Operation	505-786-4211/4187/4188
Food Services	505-786-4128
Child Care Center	505-786-4122/4198
Library	505-786-4300/4301/4130
Title III Program Office	505-786-4103
Extension Agent (East Campus)	505-786-4165
Transportation	505-786-1107/1109
Security	505-340-7444, (505) 786-4345

Crownpoint Community Phone List	
Crownpoint Police Department	505-786-2050
Crownpoint Hospital	505-786-5291
Crownpoint High School	505-786-5664
Crownpoint Fire Department	505-786-7385
Navajo Nation Emergency Management	505-786-6892
Eastern Navajo Headstart Program	505-786-2350
Social Services -Family Services Unit	505-786-2303
Department of Behavioral Health Services	505-786-2111
Crownpoint Chapter House	505-786-2130
Navajo Tribal Utility Authority	505-786-5566 1-800-528-5011
Continental Divide Electric Company	505-285-6656 1-877-775-5211
Ikard & Newsom Propane Company	505-786-5359 1-800-442-6453
Crownpoint Community School	505-786-6160
Crownpoint Elementary School	505-786-5324
Crownpoint Mid School	505-786-5663

Appendix B Site Map for NTU Campus



Appendix C

NTU BUILDING CODES

<u>BLDG</u>	<u>BLDG</u>	<u>BLDG</u>	<u>BLDG</u>
M1	Modular Classroom/ABE/GED	MT11	Faculty/Staff Trailer
M2	Modular Classroom/ABE/GED	MT12	Faculty/Staff Trailer
M3	Modular Classroom/Energy Systems	MT13	Faculty/Staff Trailer
M4	Modular Office/Counseling	MT14	Faculty/Staff Trailer
M5	Modular Classroom/Early Childhood	MT15	Faculty/Staff Trailer
M6	Modular Classroom/English	MT16	Faculty/Staff Trailer
M7	Modular Classroom/Math	MT17	Faculty/Staff Trailer
M8	Modular Classroom/E-Learning	MT18	Faculty/Staff Trailer
M9	Modular Classroom Math	MT19	Faculty/Staff Trailer
M10	Modular Classroom Dine' Studies	MT20	Faculty/Staff Trailer
M11	Modular Classroom Stem Lab	MT4	Maintenance Storage
M12	Modular Classroom Math	MT5	Maintenance Storage
M14	Modular Classroom English	MT6	Guard House
M15	Modular Classroom English	MT7	Dome (Observatory)
M16	Book Store	MT8	Faculty Housing
M31	Walk in Freezer/Storage	MT9	Faculty Housing
M32	Multi-Purpose (Cafeteria, Copy)	MT10	Faculty Housing
M33	Faculty Housing complex A(1-6)	EAST CAMPUS	
M34	Faculty Housing complex B(1-6)	E1	Veterinarian/Clinic/classroom
M35	Faculty Housing complex C(1-6)	E2	Veterinarian Barn
M36	Student Service/Law Advocate/Nursing	E3	Pole Barn
M37	Student Family Housing (Apt 1-16)	ET1	Extension Office
M38	Student Family Housing (Apt 17-32)	ET2	Camper Trailer 1
M39	Efficiency Apartment 1	ET3	Camper Trailer 2
M40	Efficiency Apartment 2	WEST CAMPUS	
M41	Culture Center Dine' Studies/Math	W1	Storage (Old Maint. Shop)
M42	Empowerment Center(Admin)	W2	Storage (Old Carpentry Class)
M43	Library	W3	Storage (Old 4 Automotive Class)
M44	Administration/Admission/Registration	W4	Storage (Old Building Maintenance)
M45	Outside Restrooms	W5	Carport
M47	Child Care Center	W6	Lube House
M48	Science Building/Business/ Technology	W7	Records (Old Warehouse)
M49	Trades Building	W8	Pump House
M50	Welding Shop	W9	Potable Water House
M51	Metal building	W10	HRI Office
M53	Culinary Arts/Hospitality Center	W11	Large Storage (Old Warehouse)
M54	Information Technology	W12	Horse shoe Building
M55	Fabrication Lab	CHINLE CAMPUS	
M56	Green House	C1	Admin/Classroom
M57	Wellness Center	C2	Admin/Classrooms
MT1	CDL Trailer	C3	Carpentry Class
MT2	Maintenance Trailer	C4	Storage Shed

Appendix D

Navajo Technical University Physical Address Map: Lower Point Road/State Highway 371, Crownpoint, NM 87313

